

Carbon Reduction Plan



Renew | Protect | Maintain

our company

Nothing is so **important**
that it cannot be done **safely**
and **sustainably**

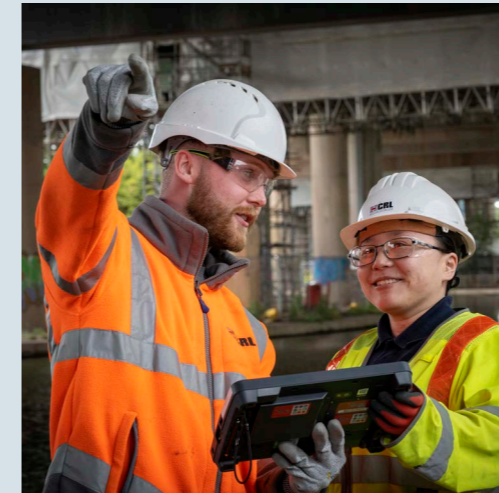
CRL have a reputation based on quality and innovative engineering underpinned by our commitment to health, safety and sustainability.

As a business, we recognise the urgent need to act on climate change. The built environment plays a significant role in national emissions, and we recognise our role and contributions to those emissions.

Our Carbon Reduction Plan sets out not just our targets, but our wider commitment to becoming a lower-carbon, more sustainable business. This is not a box-ticking exercise, it is a strategic response to the challenge ahead, embedded into how we operate, deliver projects, and engage with our supply chain.

We know that the road to Net Zero will require continued focus, investment, and innovation. That's why we've set clear milestones on our journey to 2045 and are already taking practical steps to reduce emissions in the areas we can control.

Through consistent measurement, collaborative working, and a determination to improve year-on-year, we are committed to delivering meaningful change, not just for compliance, but for the long-term benefit of our clients, communities, and the environment.



commitment to
Net Zero

CRL's entire business operations are committed to achieving Net Zero by 2045. However, our highways division have set targets of Net Zero by 2040. This ambitious commitment aligns with UK Government targets and the company's sustainability strategy. Our progress on this will be internally reviewed on an annual basis, with our reporting figures being externally audited by Tunley Environmental.

But building a sustainable future starts with understanding our impact today. We measure and report our emissions using internationally recognised standards, including ISO 14064-1:2018 and the GHG Protocol Corporate Standard. Our reporting

covers Scope 1 (direct emissions), Scope 2 (purchased electricity), and all material upstream Scope 3 emissions.

Using the latest government conversion factors, we ensure our data is accurate, consistent, and transparent. Our emissions figures are reviewed annually and independently audited, giving confidence to our progress reporting, including compliance with PPN 006/21 and SECR standards. By setting a clear and reliable foundation, we are not only meeting our obligations but building the insights needed to deliver meaningful carbon reductions over time.

Baseline Emissions Footprint (2023)

Establishing a clear starting point was an essential first step in our carbon reduction journey. In 2023, we recorded total emissions of 6,839 tCO₂e, based on detailed assessments across Scope 1, Scope 2 and Scope 3 activities, following ISO 14064-1:2018 and the GHG Protocol standards.

Our largest impacts were found within our supply chain and procurement activities, highlighting the importance of strong collaboration with partners and suppliers. This baseline now acts as our reference point — a line in the sand from which we can measure every step of our progress towards a lower-carbon future.

	Total (tCO ₂ e) - 2023
Scope 1	1,009
Scope 2	54
Scope 3	5,777
Total Emissions	6,839

Current Emissions Reporting (2024)

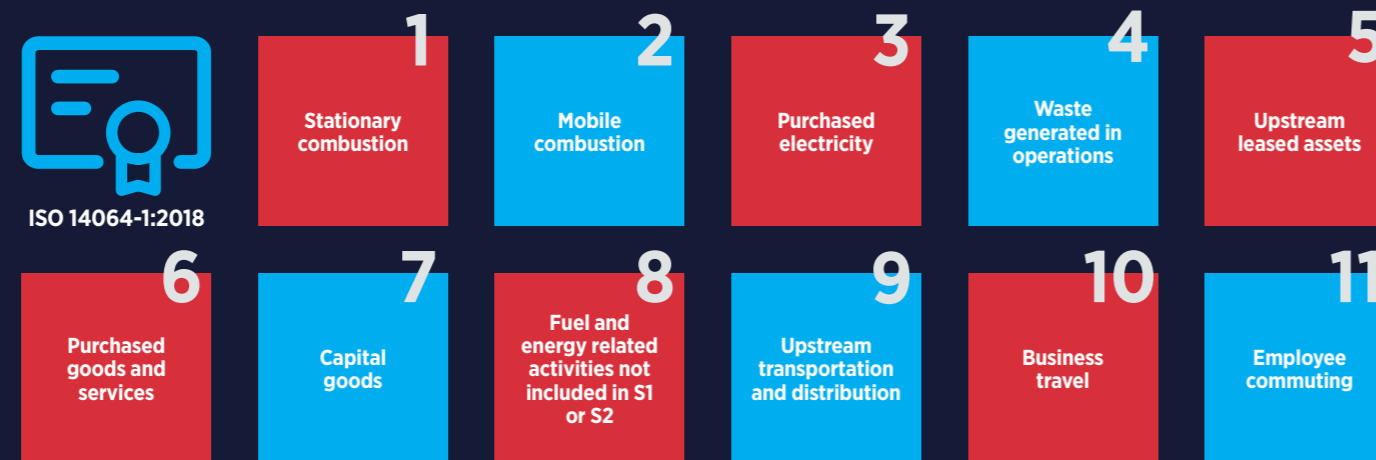
Due to the spend-based methodology CRL currently uses to measure our emissions, there is a 28% increase in Scope 3 emissions 2024. This can be mainly attributed to a 51% increase in spend between reporting years, coupled with just a 38% increase in turnover in this time.

Over time we will look to move away from this methodology toward activity data emissions reporting methodologies which will better reflect the choices we are making and the emissions they create.

	Total (tCO ₂ e) - 2024	Percentage Change Against Baseline (%)
Scope 1	980	-3
Scope 2	38	-30
Scope 3	7,381	+28
Total Emissions	8,400	+19

Additional details relating to the Baseline Emissions calculations

This baseline and the current reporting years emissions have been created in line with recognised methodologies, ISO 14064-1:2018 and GHG Reporting Protocol corporate standard. All material emissions from scopes 1, 2 and 3 have been included.



Please note, while downstream emissions are a mandatory reporting category under PPN 006/21, no identifiable downstream emissions have been recorded for CRL. As such, these emissions are of no material significance to CRL's overall emissions and are reported as nil.

Turnover/Carbon Intensity Ratio

CRL has used our emissions figures to analyse a specific carbon intensity ratio of CO₂e/£millions of turnover. This allows us as a business to compare our emissions against our turnover year on year.

This intensity ratio suggests that even though CRL's emissions have increased the amount of CO₂e produced per £1 million of turnover has decreased, meaning that the carbon intensity of our activities have decreased despite significant increases to turnover.

	FY 2022-2023	FY 2023-2024	Annual Change
Turnover (£/M)	50	69	+£19m
Intensity Ratio (t CO ₂ e/£m)	135.5	121.9	-13.5t CO ₂ e/£M

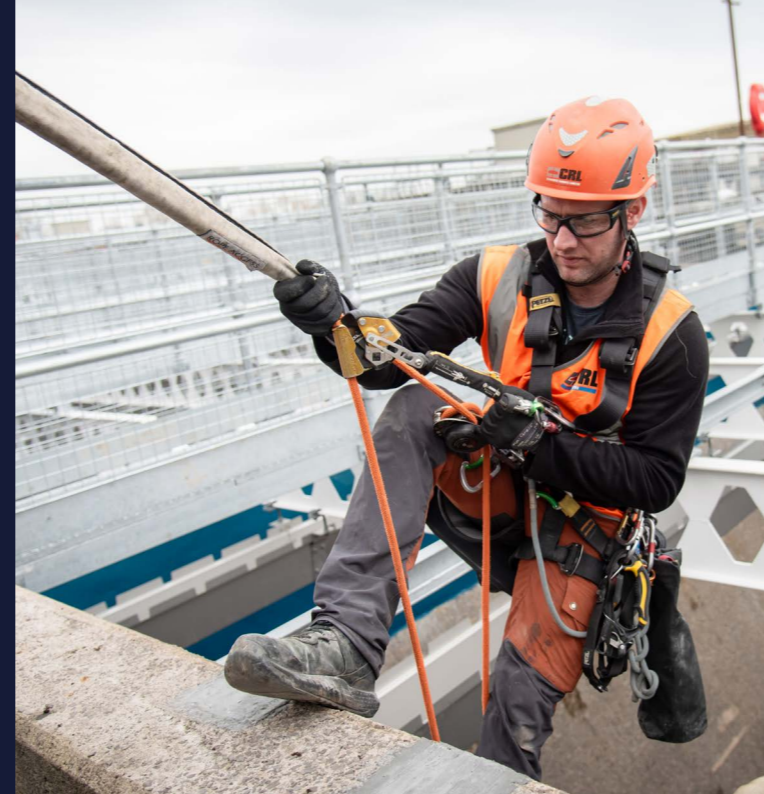
Emission Reduction Target

Our commitment to achieving Net Zero by 2045 and 2040 for our Highways Division is driven by a clear plan and a strong sense of responsibility. We know that lasting change requires clear steps, so we have set ambitious but achievable targets to guide us.

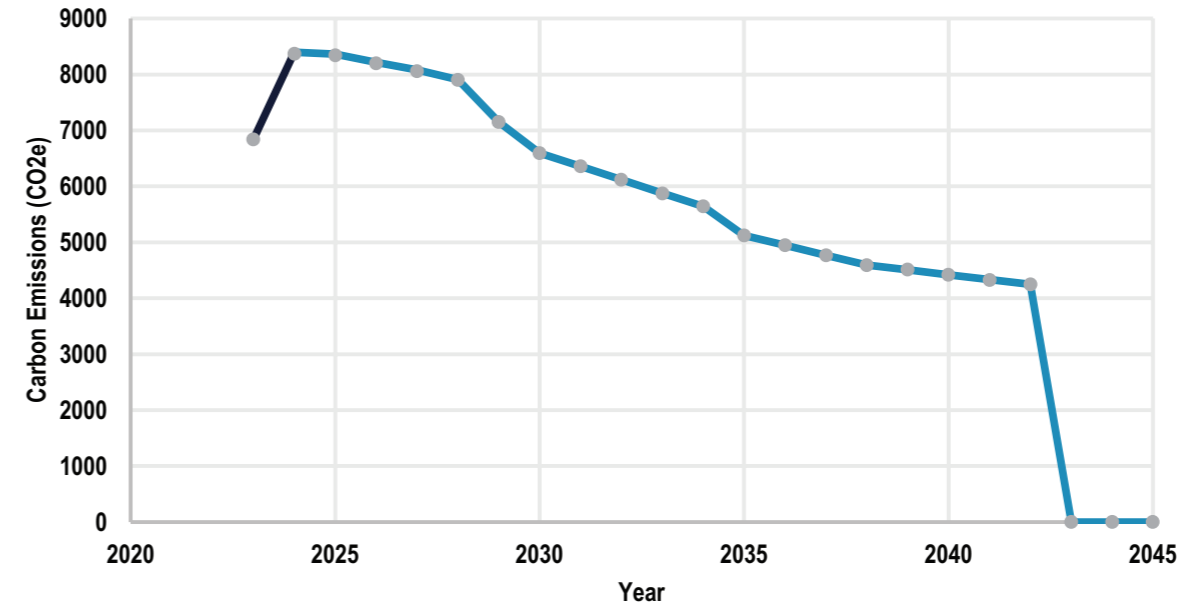
We aim to eliminate all but residual market-based emissions by 2026 through a full transition to renewable energy. By 2030, we plan to have

reduced our combined Scope 1 and 2 emissions by 57% against our 2023 baseline.

Looking further ahead, we are committed to halving total absolute emissions across all scopes by 2040, before reaching full Net Zero by 2045, with only minimal residual emissions offset through credible schemes. Progress will be tracked through regular internal reviews and external audits.



CRL Long Term Carbon Reduction Targets 2025-2045



CRL have also set longer term targets for our carbon emissions

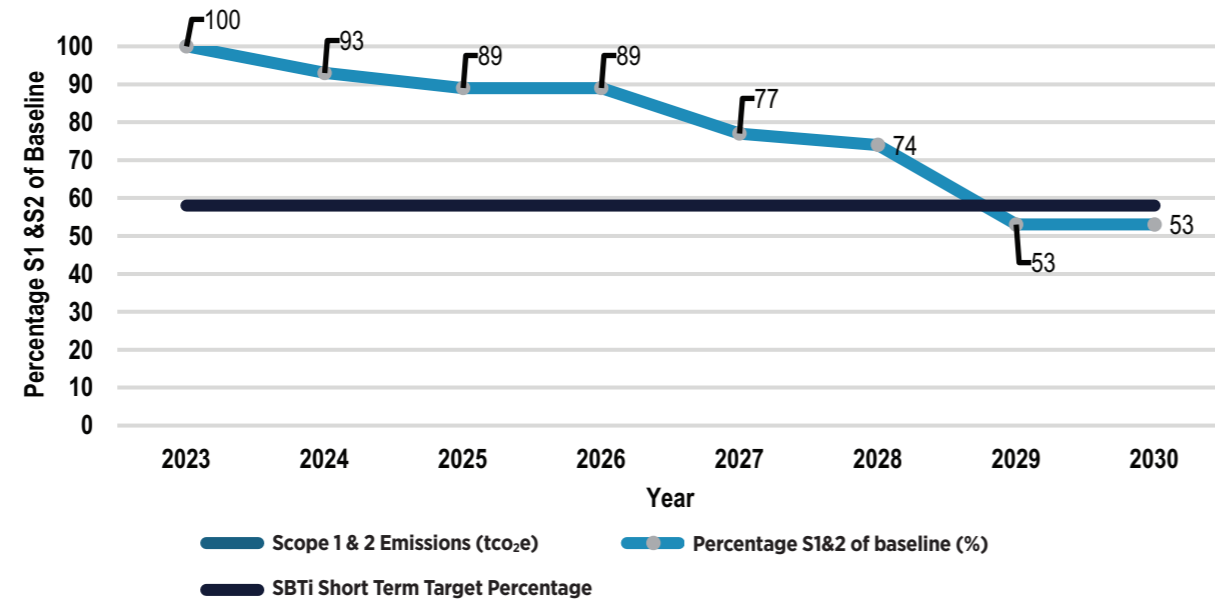
- 1 Net Zero for scope 1 and 2 emissions by 2035
- 2 50% reduction in absolute emissions by 2040
- 3 Net Zero by 2045

CRL have committed to Net Zero emission by 2045

We have set near term carbon reduction targets for our scope 1 and 2 emissions up to 2030, in line with SBTi.

- 1 Net Zero market-based Scope 2 emissions by 2026
- 2 57% reduction in Scope 1 and 2 emissions by 2030

CRL Short Term Scope 1 & 2 Emissions Targets (2025 - 2030)



Completed Carbon Reduction Projects

Since our 2023 baseline, the following carbon reduction plans have been implemented, leading to a 19% reduction in scope 1 and 30% reduction in scope 2 emissions.

Scope 1

1

SWITCHING TO ALTERNATIVE FUELS ONSITE

Around 65% of CRLs onsite fuel usage now comes from Hydrotreated Vegetable Oil (HVO) which is a drop in replacement for diesel derived from waste feedstocks.

2

LOW-CARBON POWER ON-SITE

Low carbon power options such as: solar powered welfare units, hybrid solar-battery generators, BESS, electric tools and plant are being rolled out across CRL sites reducing our fuel consumption on average by 75%.

3

INVESTMENT IN ELECTRIC VEHICLES

Investment in electric vehicles, reducing transport related fuels from our fleet.

4

ELECTRIC VEHICLES CHARGING

Installation of electric vehicles charging points at all offices.

Scope 2

1

100% REGO ENERGY

CRL have moved all of their electricity tariffs over to REGO backed Renewable Electricity Tariffs, leading to our market based scope emissions as zero.

2

INSTALLATION OF A SOLAR PV

Installation of a solar PV array at our Falkirk office.

Scope 3

1

IN HOUSE CAPABILITIES

We have employed a Sustainability Manager to create our carbon reduction strategy and implement it internally and throughout our supply chain. Alongside this, we continue to work with Tunley Environmental who provide auditing and further technical guidance to CRL.

2

REDUCE EMPLOYEE COMMUTING

Efforts to reduce employee commuting through changes to work types using teams and hybrid working. Alongside promotion of the use of public transport and a 'Cycle to Work' scheme.

3

SUSTAINABLE PROCUREMENT

Implementation of sustainable procurement guidance documents for procurement teams, aimed at detailing minimum standards and best practices when making procurement decisions.

4

ENCOURAGE ELECTRIC VEHICLES UPTAKE

We have made changes to our personal allowance policy for vehicles to encourage the uptake in electric vehicles.

Future Carbon Reduction Projects

To meet our ambitious carbon reduction targets set out above CRL will look to implement the following carbon reduction plans in the future

Scope 1

1

MOVING SITE FUELS TO ALTERNATIVE RENEWABLE FUEL SOURCES

In the short term, CRL will move away from diesel and propane on site replaced with HVO and bio-propane, but with stringent procurement guidance in place.

2

ELECTRIFICATION OF OUR SITES

Across our carbon reduction journey, CRL will electrify our sites through grid connection, solar PV and BESS and trialling emerging technologies like hydrogen fuel cells to reduce our dependency on fuels to power our sites.

3

ELECTRIFICATION OF HEATING SYSTEMS

The electrification of heating systems in all main offices will contribute a reduction of 40t CO2e per annum.

4

ELECTRIC FLEET

Implementation of electric vehicles for our company owned vehicles. This is forecasted to reduce our Scope 1 emissions by 63t CO2e per year. This reduction will also be compounded further by the renewable energy transition of the electricity grid.

Scope 2

1

IMPROVING ENERGY EFFICIENCY AND SELF GENERATION

CRL will now look to improve the energy efficiency of our office spaces and investigate the potential to install solar PV with BESS at the remainder of our offices.

sustainable future
starts with understanding
our impact **today**

Scope 3

1

CARBON MANAGEMENT SYSTEM

CRL will now look to embed our PAS2080- compliant carbon management system across the business, beginning with our major schemes. This project level analysis of our emissions will help to firstly understand and then reduce our emissions particularly from our purchased goods and services.

2

SUPPLY CHAIN ENGAGEMENT

Supply chain engagement processes will begin to work with our supply chain to identify opportunities for the use of lower carbon materials, improve production and manufacturing processes and to begin measuring their own carbon emissions.

3

LOW CARBON ALTERNATIVES

CRLs largest contributor to emissions is from the materials that we purchase. As technology improves and costs reduce, we will look to source low carbon alternatives to our key materials.



NET ZERO BY 2045

Declaration & Sign Off

This Carbon Reduction Plan has been completed in accordance with PPN 006/21 and associated guidance and reporting standard for Carbon Reduction Plans. Emissions have been reported and recorded in accordance with the published reporting standard for Carbon Reduction Plans and the GHG Reporting Protocol corporate standard and uses the appropriate Government emission conversion factors for greenhouse gas company reporting.

Scope 1 and Scope 2 emissions have been reported in accordance with SECR requirements, and the required subset of Scope 3 emissions have been reported in accordance with the published reporting standard for Carbon Reduction Plans and the Corporate Value Chain (Scope 3) Standard. This Carbon Reduction Plan has been reviewed and signed off by CRL's board of directors.

Signed:

Date: October 2025





Renew | Protect | Maintain

Cathite House
23a Willow Lane
Mitcham, Surrey
CR4 4TU
020 8288 4848
london@crl.uk.com

crl.uk.com